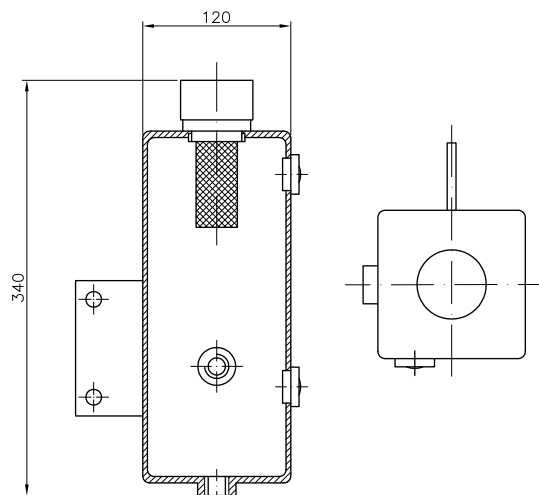


LQT



SECTORS:



CHARACTERISTICS:

- Temperature: -60° C to +200° C.
- Working pressure: up to 25 bar.
- Volume: 4, 6, 10 l.
- Materials: Stainless steel.

DESCRIPTION:

LST for supplying barrier fluid with or without pressure in double cartridge or mechanical seal installations which enables the circulation of the barrier fluid due to the thermosiphon effect or the pumping ring (mechanical seal). API52, API53 and API53A configuration.

LS



SECTORS:



CHARACTERISTICS:

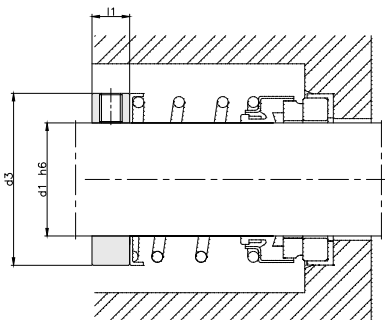
- Ring with two allen screws for attaching it to the shaft.

DESCRIPTION:

This element is attached to the shaft to permanently ensure the compression of the rotating part of the mechanical seal. It can be used with rubber bellows or single spring mechanical seals.

DIMENSIONS CHART

Dimensions in mm



Shaft mm	d ₃	l ₁
12.0	21.0	7.5
12.7	21.0	7.5
14.0	23.0	7.5
15.0	24.0	7.5
15.8	25.0	7.5
16.0	25.0	7.5
18.0	31.0	7.5
19.1	31.0	7.5
20.0	33.0	7.5
22.0	35.0	7.5
22.2	35.0	7.5
24.0	37.0	7.5
25.0	38.0	7.5
25.4	38.0	7.5
28.0	41.0	7.5
28.6	41.0	7.5
30.0	43.0	7.5
31.7	45.0	7.5
32.0	45.0	10.0
33.0	46.0	10.0
35.0	48.0	10.0
38.0	53.0	10.0
40.0	55.0	10.0

Shaft mm	d ₃	l ₁
41.2	55.0	10.0
43.0	58.0	10.0
44.4	60.0	10.0
45.0	60.0	10.0
47.6	63.0	10.0
48.0	63.0	10.0
50.0	65.0	10.0
50.8	65.0	10.0
53.0	68.0	10.0
53.9	68.0	10.0
55.0	70.0	10.0
57.1	70.0	10.0
60.0	79.0	10.0
60.3	79.0	10.0
63.5	82.0	10.0
65.0	84.0	12.0
66.6	84.0	12.0
69.8	89.0	12.0
70.0	89.0	12.0
73.0	95.0	12.0
75.0	98.0	12.0
76.2	98.0	12.0

Dimensions subject to changes or modifications.